

GSMPHONE

Fixed Wireless Phone

GSMPhone



telecom^{FM}



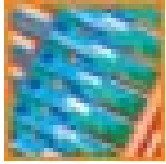
Fixed Wireless Phone

Installation & User Guide

Version.01 - April 2005

Installation & User Guide

Version .01 – April 2005



Document Control

| Date | Doc Version | Change | Authority |
|------------|-------------|-------------------------------------|-----------|
| April 2005 | 1 | 1 st release of document | CH/TB |
| | | | |
| | | | |
| | | | |

Notices

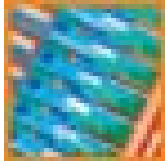
Emergency Calls

This terminal operates using GSM signals, which cannot guarantee connection in all conditions. Therefore, you should never rely solely on the terminal equipment for essential communications such as medical or emergency services.

No responsibility is assumed by TFM for the use or reliability of the GSMPhone when used in a situation or with other equipment not supplied or specified by TFM.

TFM shall have no liability for any error or damages of any kind resulting from the use of this document.

| | | |
|--|---|-----------------|
| Declaration of Conformity | | |
| Applicant: | TelecomFM Ltd. | |
| Address: | 895 Plymouth Road, Slough SL1 4LP, Berkshire, U.K. | |
| Product: | Cell Route | |
| This equipment complies with the European R&TTE Directive no. 1999/5/EC on radio and telecommunication terminal equipment. | | |
| TelecomFM May 2003 | Signed..... | Roger Lewington |



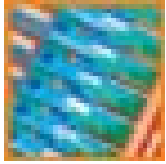
GSMPhone Introduction

Thank you for the purchasing the GSMPhone terminal.

The GSMPhone incorporates:

- LCD Display (1)
- Antenna (2)
- Menu Keys (3)
- Handset (4)
- Alpha Numeric Keys (5)
- Power Connection (6)





Setting up the terminal

Remove the GSMPHONE from the packaging, and proceed as follows:

Warning! To avoid damage do not connect power until you have inserted the SIM card

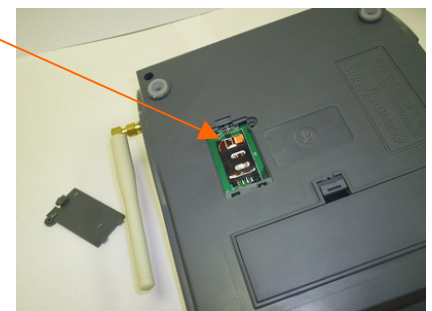
- Attach Antenna
- Attach Handset
- Install the SIM card. (Making sure the PIN lock is deactivated if applicable).
- Install the GSMPhone in preferred location following guidelines.
- Connect Power to the GSMPhone using Power Supply Provided.
- Check Signal Strength
- Make a test call

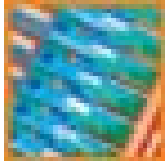
Installing the SIM card

Remove the SIM cover.
Slide back the SIM door and lift it up.

Slide the SIM into the SIM door making sure that the clipped corner of the SIM card lines up with the clipped corner of the SIM Holder.

Close the SIM door.
Slide SIM door to lock the SIM in place.
Then replace SIM cover.





GSMPhone Getting Started



Attaching the Antenna

Screw the antenna to the GSMPhone terminal on the side of the unit.



Attach the Hand set

Plug the hand set into the RJ11 connector
On the side of the GSMPhone



Connecting the power Supply

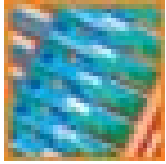
- Connect the power supply unit to the AC outlet.
- Connect the power cord from the power supply unit to the GSMPhone.



Location Of GSMPhone

For best reception locate your GSMPhone a minimum of 1 meter from any other sensitive electronic equipment.

DO NOT locate in direct sun light or near any direct heat source.



GSMPhone Getting Started



Powering Up The GSMPhone

Press the power switch on the back of the unit to on, the power – LED will come on. The phone will now carryout an auto test and log onto the GSM network. If OK, the name of the operator will be displayed in the centre of LCD. The date and time will be displayed below it.

The signal strength of network is displayed in the top left of the LCD and the battery level is on top right.

Making a test call

Pick up handset and you should hear dial tone, dial the required number. The called number should be displayed in the LCD. Press the "Talk" key to converse. The LCD will display the status of the call at each stage. i.e "Calling" when dialling out, "Communicating" when connected to the other party and "Call Ended" when either party hangs up. To terminate the call press the "SPEAKER" key or put the handset back.

Using the Speaker Function

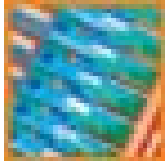
To make or answer a call using the speaker function, press the SPEAKER key

Answering Incoming calls

To answer an incoming call lift up the handset.

Missed Call

The LCD will display "Missed Call"



GSMPhone Menu Functions



Menu Functions

To Enter the Menu Function Press the "Menu" key. The following options can then be selected:

1. Phone Book
2. Messages
3. Call Log
4. Settings
5. Call Service

To scroll through the menu options use any of the directional keys below the LCD screen.

To select the required menu option either press the OK button or the corresponding digit button as displayed in the upper right hand side of the LCD.

Once a menu option has been selected this will take the user into a sub-menu section as follows;

1. Phone Book

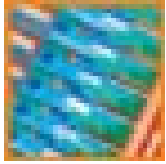
- (i) Add
- (ii) Find
- (iii) Delete
- (iv) Store Status

2. Messages

- (i) Write
- (ii) Inbox
- (iii) Outbox
- (iv) Delete All
- (v) Settings
- (vi) Store Status

3. Call Log

- (i) Missed
- (ii) Received
- (iii) Dialed
- (iv) Delete All
- (v) Call Timer



GSMPhone Menu Functions

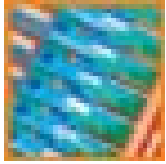


4. Settings

- (i) Alarm
- (ii) Clock
- (iii) Date
- (iv) Phone (Language, Volume, Voice, Welcome Note, keyboard Lock, Backlight, Factory Default, Screen Contrast).
- (v) Security
- (vi) Owner Number
- (vii) Auto Call

5. Call Service

- a. Network Select
- b. Band Select
- c. Fdn
- d. Call Diverts
- e. SS
- f. AOC



You can create your personal phone book by saving information as a contact. In a contact you can save details such as a name and phone number. Up to 100 contacts can be stored on the telephone. Additional contacts can be stored on the Sim card.

To add a new Contact

Either press the "Phone Book" key or scroll through the menu to "Phone Book".

Press "1" to Add a contact.

Select to store the contact on the "1" Sim, or "2" Phone"

Enter the Contact Name by using the Alpha Numeric Keypad. When complete press the "OK" key.

Now enter the Contact telephone Number. When Complete press the "OK" key.

You should now receive a Message "Saved to Sim" or "Saved to Phone".

Calling a Contact

To call a contact number saved in the Phone Book Press the "Phone Book" key.

Select "Find" by pressing the "2" key.

Type the first letter of the contact name and select "OK".

Scroll through the list until the correct contact is found.

Press the "Talk/Send" key to call the contact.

Delete a Contact

Select the Phone Book Key.

Select Delete from the sub-menu.

Select either:

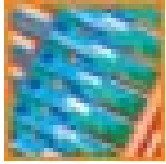
1. Sim All (this will delete all contact details from the Sim card).
2. Phone All (This will delete all contacts stored in the GSMPhone).
3. One By One (This will allow you to select individual contacts to delete).

Store Status

To check the number of contacts stored, select "Phone Book".

Select "Store Status".

The display will show the number of contacts stored and space available.



GSMPhone Text Messages



You can send and receive text messages with the Short Message Service (SMS) using the GSMPhone.

Sending Messages

Scroll through the Menu and select "2. Messages" or press the "SMS" key.

Press the "OK" Key

Select "1 Write"

Enter your message and press the "OK" key.

You can now either select:

1. Send Message
2. Send and Save Message
3. Send to Many
4. Save Message.

Inbox

To check Messages, press the menu "2 Messages" or press the "SMS" key

Press "OK" key

Select "2 Inbox"

The display will show:

- Whether or not read message.
- The time of sending.
- Phone number of sender
- Press "Up" or "Down" key to select message, then press "OK/Select" key:
 - Forward: forward this message to another.
 - Answer: answer the message. Press "Menu" key, then you can edit message. Press "OK/Select" to send the message and save it.
 - Delete: delete the message.
 - Edit: re-edit the message and send it.
 - Use number: pick up the phone number in the message and save it to 1. SIM 2. Phone.

Outbox

To check the Outbox, press the menu "2 Messages" or press the "SMS" key

Press "OK" key

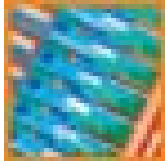
Select "3 Outbox"

The display will show any sent or un-sent messages.

Press the Up or Down key to select a message and then press "OK" to read the message.

If the "OK" key is pressed now you will have the option to:

- Forward (re-edit the message and send it)
- Delete
- Edit (re-edit the message and send it)
 - Use Number (select the number and either call it or save it).



Delete All

All messages either in the Inbox or Outbox can be deleted by selecting this option.

Press the menu "2 Messages"

Press "OK" key

Select "4 Delete All"

Select 1 to delete all messages in the Inbox

Select 2 to delete all messages in the Outbox.

Settings

To access this features Press the menu "2 Messages"

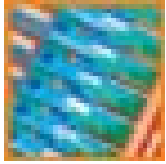
Press "OK" key

Select "5 Settings"

Select Either:

1. Service Center (To edit the service Center Number)
2. Valid period (The period of time a message should be saved for).
3. Status Report

You can request a status report for a sent text message, providing your network supports status report services. In the status report you can see if the message has been delivered or not. (allows the user to enable or disable Status Reports).



GSMPhone Call Log

The numbers of calls dialled received and missed are stored in the GSMPhone and can be accessed from the Call Log.

To access the call log press the "Menu" key.

Scroll through the menu to "3 Call Log"

Press the "OK" key.

You may now select from the following:

- "1 Missed" (10 missed numbers can be stored)
- "2 Received" (10 answered numbers can be stored)
- "3 Dialled" (10 dialled numbers can be stored)
- "4 Delete All" (This will delete all numbers in the call log).

You may call any of the numbers stored by entering any of the 3 options above and highlighting the required number and pressing Talk/Send.

Settings

Alarms

The GSMphone has 4 alarms that can be set to ring at a specific time within a 24-hour period. These alarms can be set to alarm

- (i) Once per day
- (ii) Every day
- (iii) Every Week
- (iv) Every Work Day

To set an alarm, press the menu "4 Settings"

Press "OK" key

Select "1 Alarm"

Select Alarm Number 1 to 4

Select alarm reoccurrence time 1 to 4

Input Date and press OK

Input Alarm time press OK

A message should appear "Alarm Enabled"

Clock

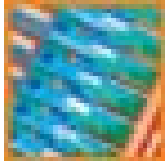
To adjust the clock time, press the menu "4 Settings"

Press "OK" key

Select "2 Clock"

Now enter the correct time.

Press "OK" A message "Clock Set" should appear.



Date

To adjust the date press the menu "4 Settings"
Press "OK" Key
Select "3 Date"
Now enter the correct date.
Press "OK" A message "Date Set" should appear.

Phone Language Setting

To change the language displayed on the screen, Press the Menu "4 Settings"
Press "OK"
Select "4 Phone"
Select "1 Language"
Select the desired Language.
Press "OK"

Phone Volume

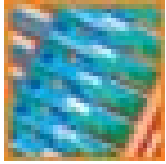
To change the volume level on the ringing tone or keypad tone, Press the Menu "4 Settings"
Press "OK"
Select "4 Phone"
Select "2 Volume"
Select "1 Ring Volume" to increase or decrease the Ringing Volume
Or
Select "2 Key Volume" to increase or decrease the key volume.

Phone – Voice

To change the Ring Tone for Incoming calls or Messages, Press the Menu "4 Settings"
Press "OK"
Select "4 Phone"
Select "3 Voice"
Select "1 Ring" to choose the desired Ring Tone
Select "2 Message" to select the desired Message Tone.

Phone – Welcome Note

To setup a welcome note when the phone is switched on, Press the Menu "4 Settings"
Press "OK"
Select "4 Phone"
Select "4 Welcome Note"
Now write your message using the Alpha Numeric keys.
Press OK, A Message "Welcome Note Success" should appear.



Phone – Lock Keyboard

This feature allows the user to lock the Keyboard. To switch the function on or off, Press the Menu "4 Settings"

Press "OK"

Select "4 Phone"

Select "5 Lock Keyboard"

Select "1 Enable Lock"

Or

"2 Disable Lock"

Phone – BackLight

This feature allows the user to select the length of time the backlight should remain on in seconds. To adjust the function, Press the Menu "4 Settings"

Press "OK"

Select "4 Phone"

Select "6 Backlight"

Enter the duration time in seconds.

Press "OK"

Phone – Factory Settings

To reset all parameters back to the factory default settings, Press the Menu "4 Settings"

Press "OK"

Select "4 Phone"

Select "7 Factory Set"

Select Yes or No.

(Note the default password is 0000).

Phone – Screen Contrast

This feature allows the user to adjust the contrast of the backlight. To adjust the function, Press the Menu "4 Settings"

Press "OK"

Select "4 Phone"

Select "8 Contrast"

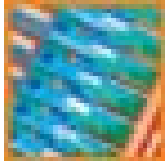
Adjust the contrast by using the up/down arrows.

Press OK.

Phone - Security

The sim card lock protects the users subscription, but not the phone itself from unauthorised use. If you change your sim card the phone still works with the new sim card.

Most sim cards are locked at the time of purchase. If the Sim Card lock is on, you have to enter your PIN (Personnel Identity Number) every time you turn on the phone. If you enter your PIN incorrectly three times in a row, the SIM card is blocked. This is indicated by the



message "PIN Blocked". To unblock it you need to enter your PUK (Personal Unblocking Key). This is supplied by your network operator.

To enable/Disable the Sim Lock, Press the Menu "4 Settings"
Press "OK"
Press "5 Security"

Press "1 Verify Pin" You can now select weather to switch the Pin On or Off.

To Change the PIN Select "2 Modify PIN"

Call Service

Network Select

The network can be selected either manually or Automatically. To select the desired method, Press the Menu "5 Call Service"
Press "OK"
Select "1 Network Select"
Select "1 Auto Mode"
Or "2 Manual Mode".

Band Select

The Bandwidth Setting for the selected operator can be selected,
Press the Menu "5 Call Service"
Press "OK"
Select "2 Band Select"
Select the correct frequency for the operator.
Press OK.