

Пример конфигурации для ССУ-Wireless COM для работы в полностью прозрачном режиме:

1. Mobile Service Center(MSC) Setting:

---Service Code: *99***1#
---PPP Username:
---Access Point Name: internet.tele2.ru

2. WIRELESS COM Setting:

---WIRELESS COM Identity Number: 13912345678
---Local Communication Port: 5001
---Online Report Interval: 0
---WIRELESS COM Maximum Transmission Unit: 256
---WIRELESS COM Reconnect Interval: 0
---Console Info Type: 1
---Last Packet Idle Interval: 600
---Identifier Separator: 0x0A
---User-defined Heartbeat Len: 0x00
---User-defined Heartbeat(Hex):

3. Data Service Center (DSC) Setting:

---DSC IP Address: 90.188.186.252
---DSC Domain Name:
---DSC Domain
---DSC Communication Port: 5002
---DNS IP Address: 0.0.0.0
---Secondary DSC IP Address: 0.0.0.0
---Secondary DSC Communication Port: 5006

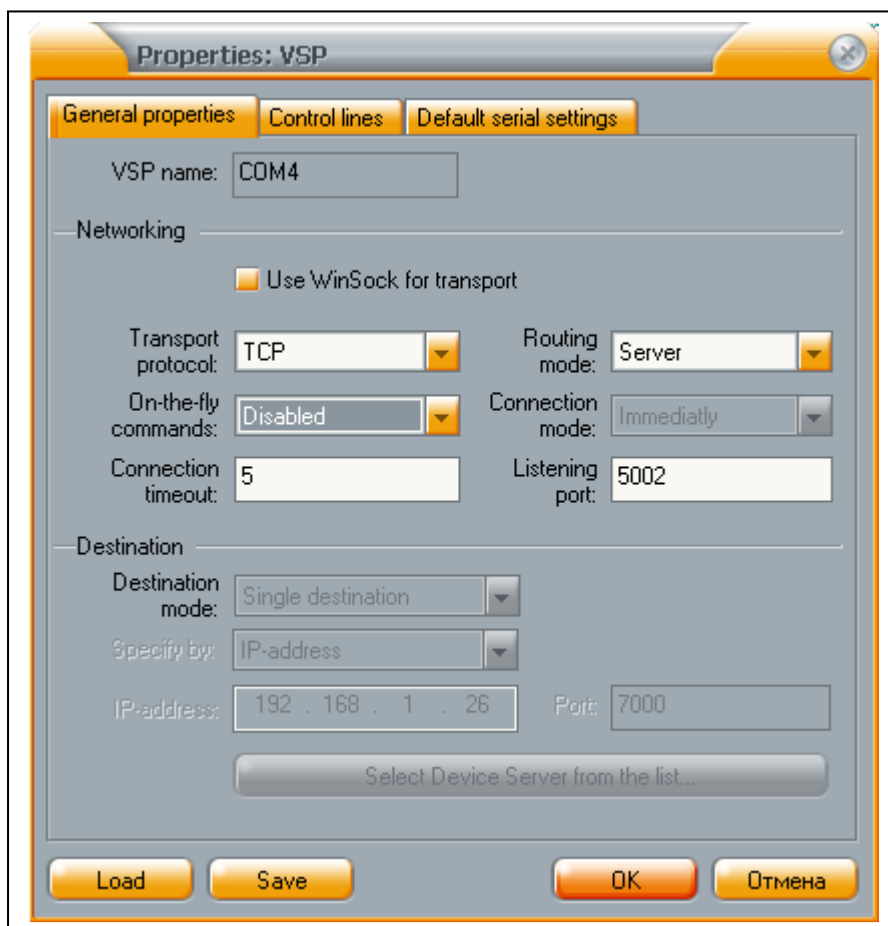
4. Serial Port Setting:

---Baud rate: 57600
---Data Bits: 8
---Stop Bit: 1
---Parity Bit: None
---Flow Control: None

5. Special Setting:

---Mobile Terminal Type : 0
---Call Type: 1
---Call Interval: 0
---Offline Interval: 0
---DSC Identity Number:
---Communication Protocol Option(None 0/DDP 1): 0
---Network Connection Type(UDP 0/TCP 1): 1
---TCP Keepalive Interval: 5
---PPP Keepalive Interval: 0

Пример настройки программы на удаленном компьютере:



В результате прибор осуществляет прямое соединение:

SIBLINK CCU WIRELESS COM Software Suite 3.2.6TR1

H/W: HWL92-M12050114-GHV12060207

S/W: ZTP131-326-C-B20080407A0900

Copyright (C) 2003-2008 NPO SIBLINK All Rights Reserved.

All Rights Reserved

Service Code:*99***1#

PPP Username:

Access Point Name:internet.tele2.ru

DSC IP Address:90.188.186.252

DSC IP Port:5002

Checking.....

Searching GPRS network...

Registered, home network.

Signal strength is <28>.

Module initialized.

Dialing...

Dial successfully.

Connecting with DSC...

Connect OK.

Далее обмен данными..